

# Pouches

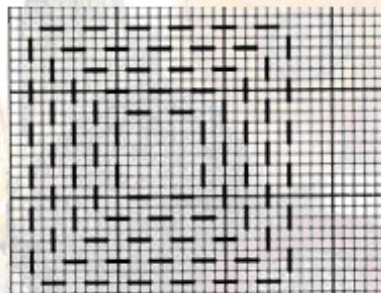
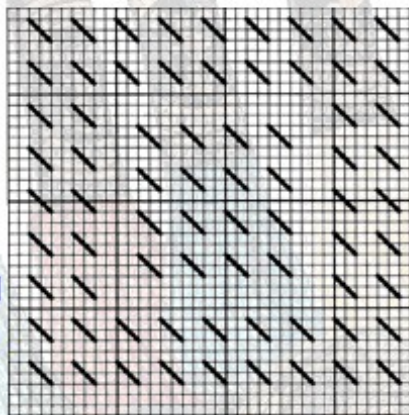
9 YEARS

## YOU WILL NEED

- *Anchor Stranded Cotton Skeins*
- *1 skein each of shade numbers 47, strands throughout*
- *Crewel needle no. 5*
- *0.25 m white matty fabric (preferably 14 holes per inch)*

## HOW TO DO

1. The diagrams 1,2,3 and 4 give the complete design for the four pouches.



 Anchor

# Pouches

9 YEARS

## YOU WILL NEED

- *Anchor Stranded Cotton Skeins*
- *1 skein each of shade numbers 47, strands throughout*
- *Crewel needle no. 5*
- *0.25 m white matty fabric (preferably 14 holes per inch)*

## HOW TO DO

2. Cut 4 pieces from the white matty fabric .



# Pouches

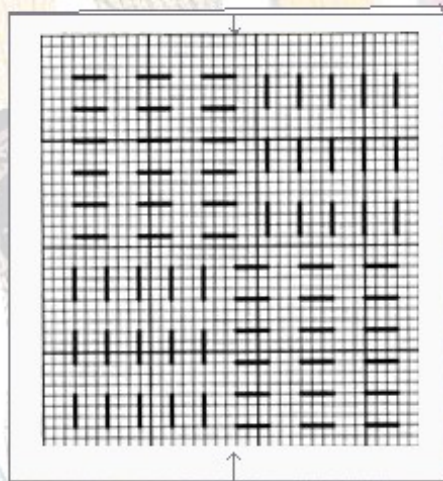
9 YEARS

## YOU WILL NEED

- *Anchor Stranded Cotton Skeins*
- *1 skein each of shade numbers 47, strands throughout*
- *Crewel needle no. 5*
- *0.25 m white matty fabric (preferably 14 holes per inch)*

## HOW TO DO

3. Fold in half and mark the centre of the upper half lengthwise with a line of basting stitches which should coincide with the arrows on the diagrams.



 **Anchor**

# Pouches

9 YEARS

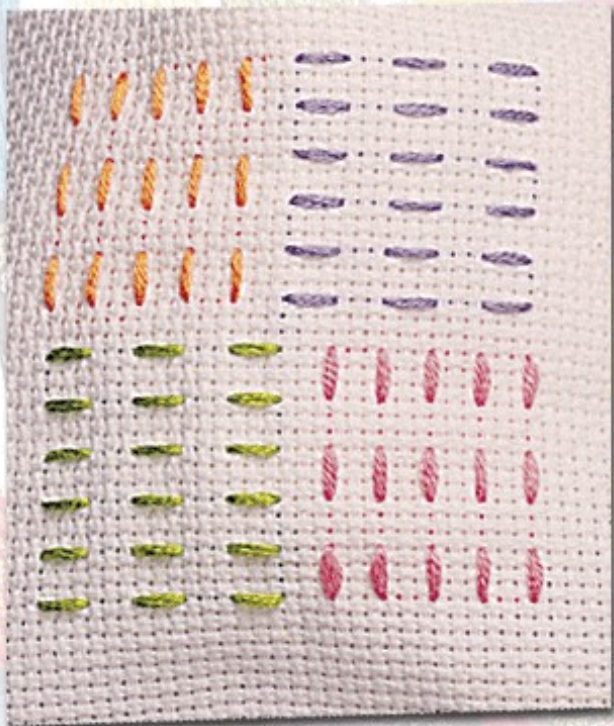
## YOU WILL NEED

- *Anchor Stranded Cotton Skeins*
- *1 skein each of shade numbers 47, strands throughout*
- *Crewel needle no. 5*
- *0.25 m white matty fabric (preferably 14 holes per inch)*

## HOW TO DO

3. Leave about an inch (upwards) from the fold and work embroidery following the diagrams and key to diagrams using simple running stitches with all six strands of thread.

4. On completion of embroidery, press on the wrong side with hot iron over a damp cloth.



 Anchor

# Pouches

9 YEARS

## YOU WILL NEED

- *Anchor Stranded Cotton Skeins*
- *1 skein each of shade numbers 47, strands throughout*
- *Crewel needle no. 5*
- *0.25 m white matty fabric (preferably 14 holes per inch)*

## HOW TO DO

5. Fold back the raw edges (at the short ends) to the wrong side of the matty fabric and hem or machine stitch. Leaving the short ends open and with wrong side facing sew the sides to make a pouch.



 **Anchor**

# Pouches

9 YEARS

## YOU WILL NEED

- *Anchor Stranded Cotton Skeins*
- *1 skein each of shade numbers 47, strands throughout*
- *Crewel needle no. 5*
- *0.25 m white matty fabric (preferably 14 holes per inch)*

## HOW TO DO

6. Make braids (using remaining thread) to match



 Anchor