

Chess Board

11 YEARS

YOU WILL NEED

- *Anchor Stranded Cotton Skeins- 3 skeins each of shade numbers 348, 10 skeins each of shade numbers 350 and 386, 7 skeins of shade number 382*
Use 6 strands throughout
- *60 cm Anchor double thread tapestry canvas code E431, 72 cm wide*
- *Tapestry needle no. 19*
- *50 cm square fabric, for backing*
- *Thick board (approximately 1 cm thick) to fit embroidered section*

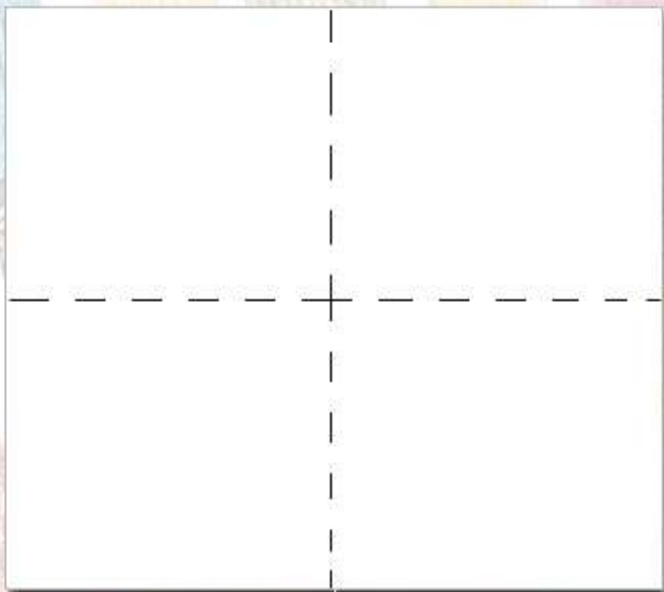


Anchor

Chess Board

HOW TO DO

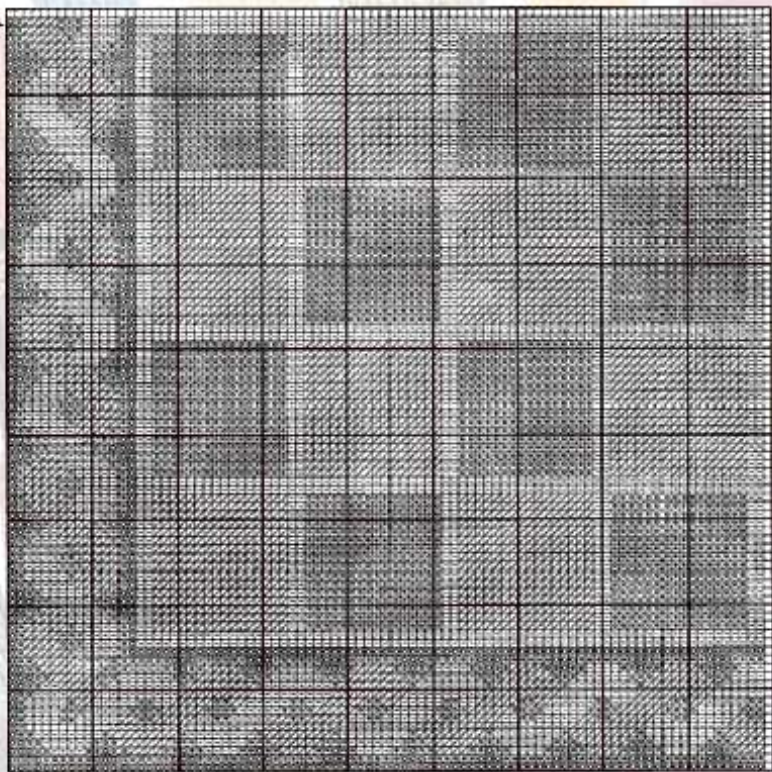
1. Mark the centre of the canvas bothways with a line of basting stitches.



Chess Board

HOW TO DO

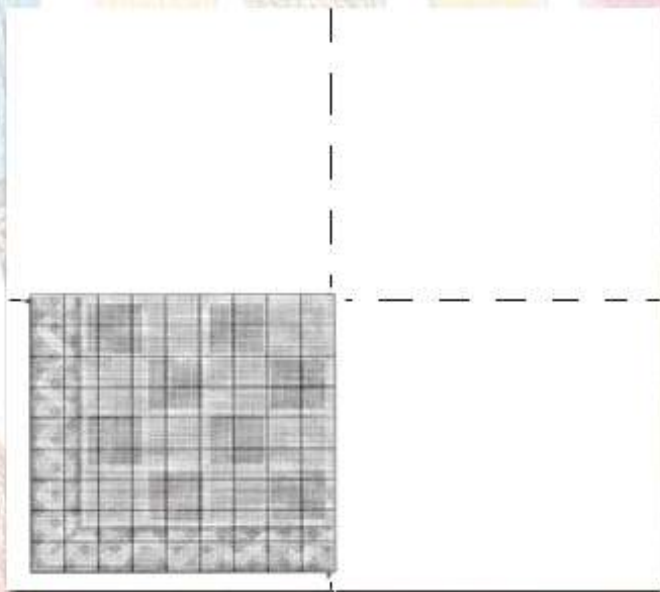
2. The diagram give a little more than the lower left hand quarter of the design, centre indicated by arrows which should coincide with the basing stitches. Each background square on the diagram represents one intersection of double threads on the canvas.



Chess Board

HOW TO DO

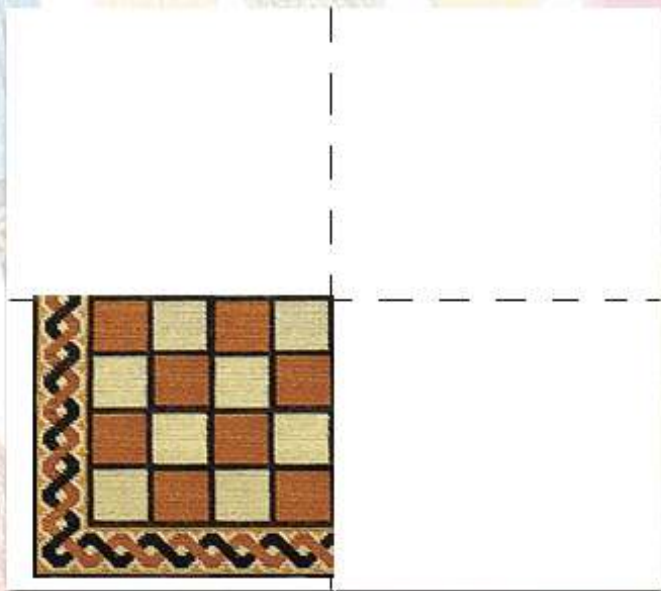
3. Commence the design centrally and work the given quarter following the diagram and key to diagram.



Chess Board

HOW TO DO

Work the design throughout in Half Cross Stitch.

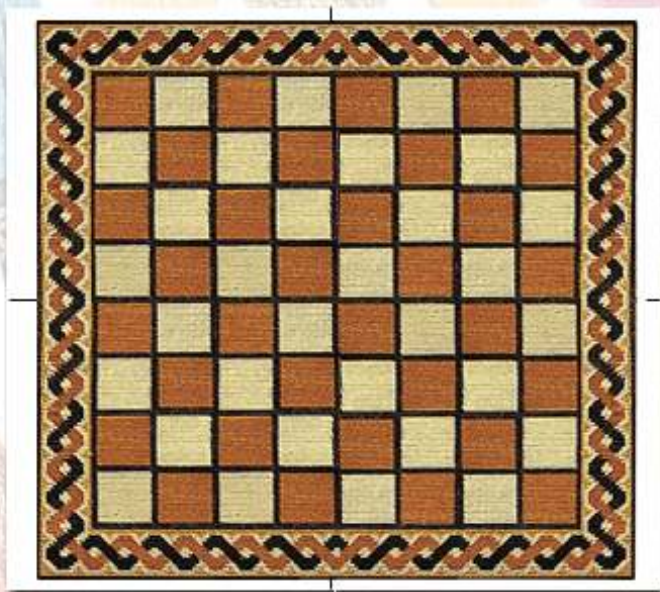


Anchor

Chess Board

HOW TO DO

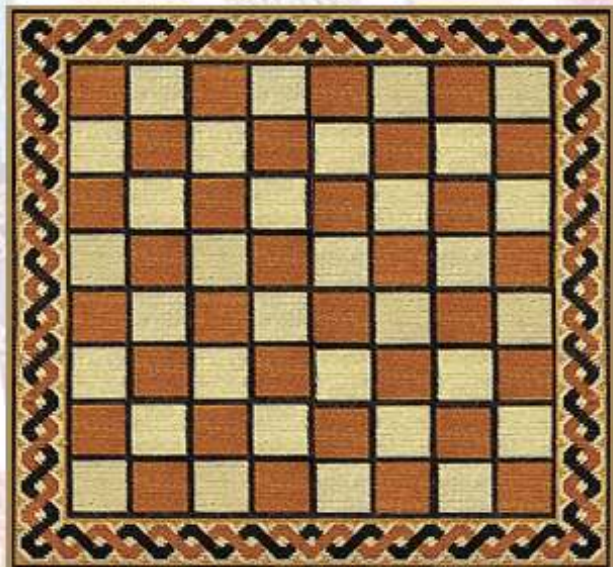
Maintaining the same colour sequence throughout, work the remaining three quarters to correspond. Then work 2 lines all around using shade 382.



Chess Board

HOW TO DO

4. Place embroidery centrally over the backing board. Fold surplus canvas to the back and secure by sticking pins into the edge of the board. Pull firmly over edge of board, mitre corners and pin in position



Anchor

Chess Board

HOW TO DO

5. Secure at the back by lacing bothways with a strong thread and oversewing corners. Remove pins.

6. Place backing fabric centrally to wrong side, trim, mitre corners and sew in position to the edge of embroidery.

